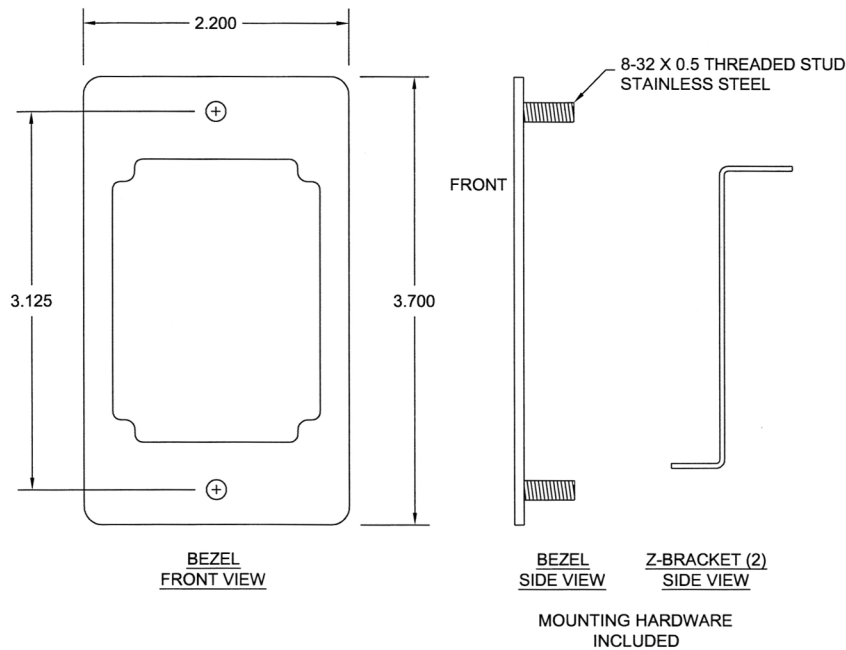
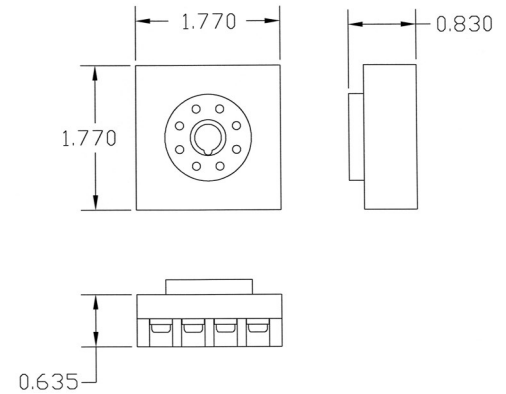


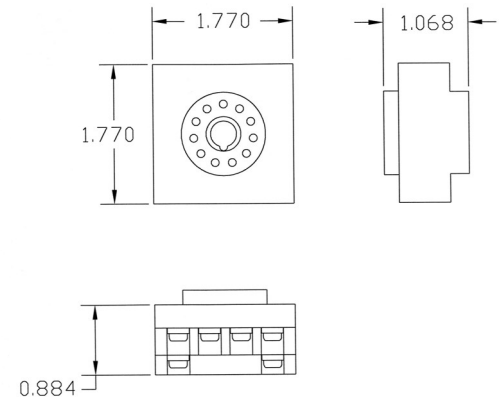
BRACKET KIT



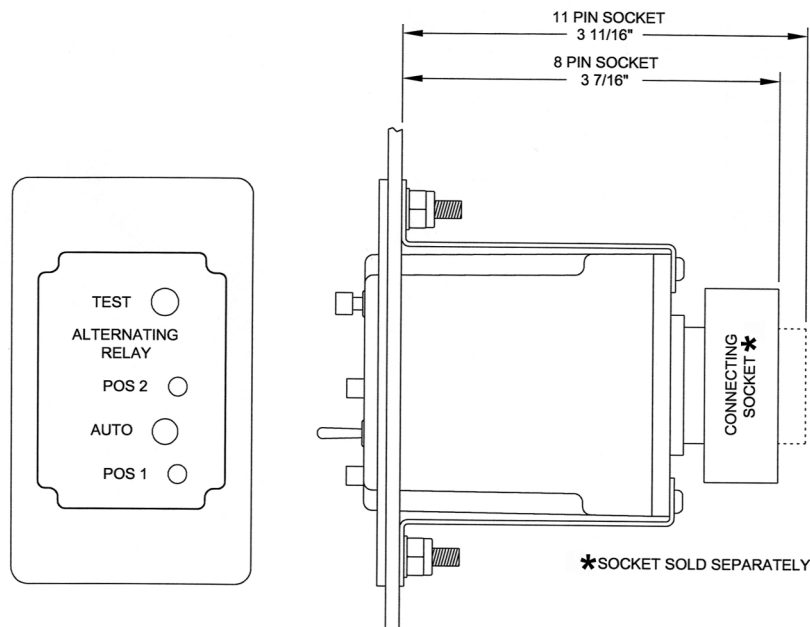
SOCKET - P3G-08



SOCKET - P3GA-11

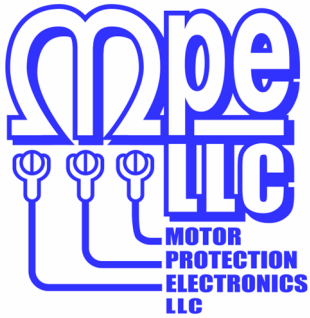


INSTALLATION DIAGRAM



INSTALLATION INSTRUCTIONS

- 1 Attach both Z-brackets to Alternator.
- 2 Cut and drill holes in panel door per installation template.
- 3 Hold the bezel over front of hole cut into deadfront.
- 4 Insert the Alternator through the back of hole.
- 5 Fasten assembly to panel door using hardware provided.



**MADE IN
THE U.S.A.**

HARDWARE

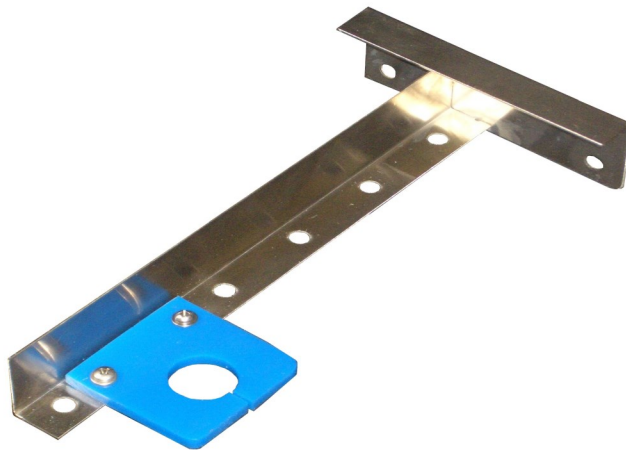


**LEVEL PROBE
BRACKET (SMALL),
LPB-1**

**Bracket Material:
304S.S.**

**Squeegee Material:
Urethane Rubber**

**Hardware:
8/32 S.S.**



**LEVEL PROBE
BRACKET (LARGE),
LPB-2**

**Bracket Material:
304S.S.**

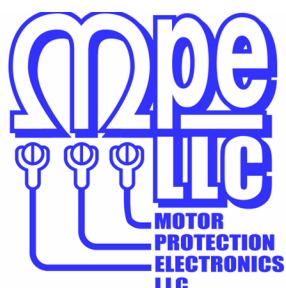
**Squeegee Material:
Urethane Rubber**

**Hardware:
8/32 S.S.**



S HOOK

**Material:
1/4 in. Round Stock,
304 S.S.**



MPE Panel Air Vent

**MADE IN
THE U.S.A.**



DESCRIPTION

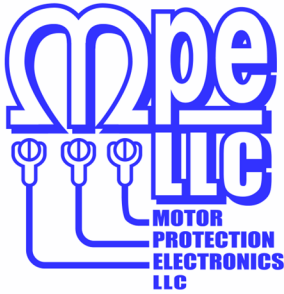
The MPE Panel Air Vent is made of an ABS plastic, type ASA that is commonly used to mold exterior automotive parts, resulting in a product that will have a long life when exposed to outdoor conditions. The air vent comes with a foam screen insert filter for use in control panel ventilation. This popular air vent had been discontinued by the previous manufacturer, and has been retooled by M.P. Electronics for their OEM customers.

SPECIFICATIONS

Dimension, Width:	5.0 Inches
Dimension, Thickness:	1.25 Inches
Material:	ABS Plastic, type ASA (Outdoor ABS)
Color:	Black
Filter Type:	Foam, 20ppi, 1/4 inch thick, Charcoal color
NEMA Rating:	NEMA 1

ORDERING INFORMATION

Part Number: MPE Air Vent



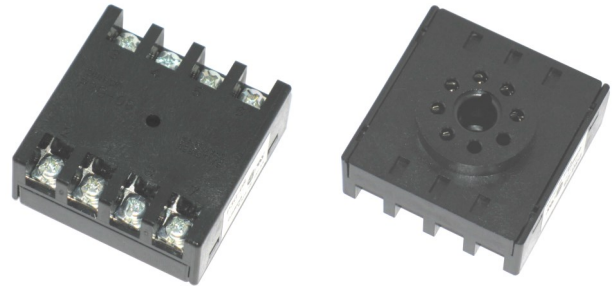
SOCKETS

Part Number: P3G-08

8 Pin, Reverse Mount

Rating: 6A, 250VAC

UL Recognized, CSA

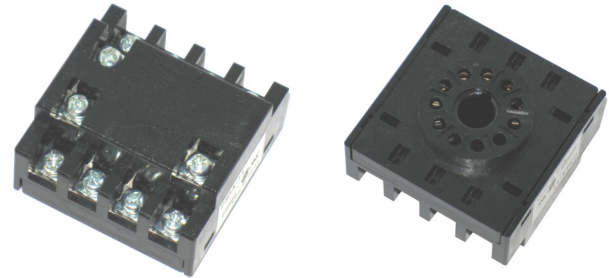


Part Number: P3GA-11

11 Pin, Reverse Mount

Rating: 6A, 250VAC

UL Recognized, CSA



Part Number: PF083A-E

**8 Pin, Din-Rail Mount
with holes for locking clips**

Rating: 10A , 250V

UL Recognized, CSA



Part Number: 70-464-1

8 Pin, Din-Rail Mount

Rating: 10A , 600V

**UL Recognized
USA, Canada**



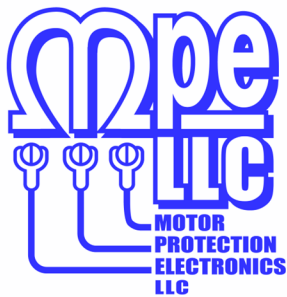
Part Number: SR3P-05

11 Pin, Din-Rail Mount

Rating: 10A , 300V

UL Recognized, CSA





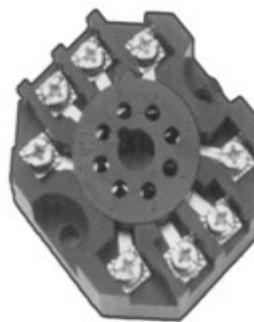
SOCKETS

Part Number: RB08-PC

8 Pin, Surface Mount

Rating: 10A , 600V

UL Recognized, CSA

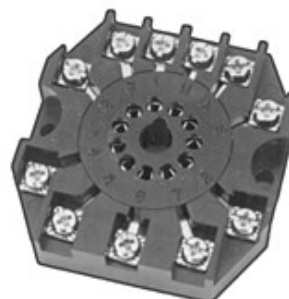


Part Number: RB11-PC

11 Pin, Surface Mount

Rating: 10A , 300V

UL Recognized, CSA

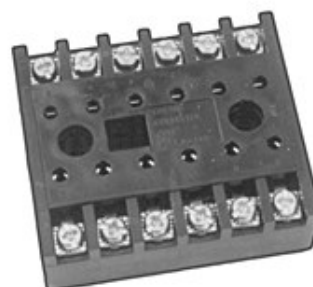


Part Number: SD12-PC

12 Pin, Surface Mount

Rating: 10A , 600V

UL Recognized, CSA



Part Number: DR12

12 Pin, Din-Rail Mount

Rating: 10A , 600V

UL Recognized, CSA

