

Operating Instructions for Rotating Vane Flow Indicators

Model: DIH



Order from: **C A Briggs Company**
622 Mary Street; Suite 101; Warminster, PA 18974
Phone: 267-673-8117 - Fax: 267-673-8118
Sales@cabriggs.com - www.cabriggs.com

1. Contents

1. Contents.....	2
2. Note	3
3. Instrument Inspection.....	3
4. Regulation Use	3
5. Operating Principle	4
6. Mechanical Connection.....	4
7. Technical Information.....	5
8. Order Codes	6
9. Dimensions	6

Manufactured and sold by:

Kobold Messring GmbH
Nordring 22-24
D-65719 Hofheim
Tel.: +49(0)6192-2990
Fax: +49(0)6192-23398
E-Mail: info.de@kobold.com
Internet: www.kobold.com

2. Note

Please read these operating instructions before unpacking and putting the unit into operation. Follow the instructions precisely as described herein.

The devices are only to be used, maintained and serviced by persons familiar with these operating instructions and in accordance with local regulations applying to Health & Safety and prevention of accidents.

When used in machines, the measuring unit should be used only when the machines fulfil the EWG-machine guidelines.

as per PED 97/23/EG

In acc. with Article 3 Paragraph (3), "Sound Engineering Practice", of the PED 97/23/EC no CE mark.

Diagram 8, Pipe, Group 1 dangerous fluids

3. Instrument Inspection

Instruments are inspected before shipping and sent out in perfect condition.

Should damage to a device be visible, we recommend a thorough inspection of the delivery packaging. In case of damage, please inform your parcel service / forwarding agent immediately, since they are responsible for damages during transit.

Scope of delivery:

The standard delivery includes:

- Rotating Vane Flow Indicators model: DIH
- Operating Instructions

4. Regulation Use

Any use of the Rotating Vane Flow Indicators, model: DIH, which exceeds the manufacturers specification may invalidate its warranty. Therefore any resulting damage is not the responsibility of the manufacturer. The user assumes all risk for such usage.

5. Operating Principle

The Rotating Vane Flow Indicator rotates on an axle shaft independently from the flow. The presence or absence of rotary motion indicates whether there is flow or not.

6. Mechanical Connection

Before installation

- Remove all packing materials and transport retainers and ensure that no such materials remain in the device.
- Make sure that the maximum operating pressure and temperature of the device are not exceeded. (see 7. Technical Information)
- Mount the flow indication tension-free into the pipe.
- After the installation the rotating vane axle should be vertical.
- Avoid water hammer in the measuring tube e.g. caused through a very quick shut off of the flow.
- If possible, check directly after mechanical installation that the connection thread to pipe is fully sealed.

7. Technical Information

DIH-11

Housing:	Nickel plated brass (CuZn39Pb3 nickel plated)
Cover:	PMMA (Plexi)
Seals:	NBR
Rotor:	Polypropylene
Axle:	ceramic
p _{max} :	16 bar
t _{max} :	80°C

DIH-12

Housing:	stainless steel (1.4404)
Cover:	PMMA (Plexi)
Seals:	FPM
Rotor:	Polypropylene
Axle:	ceramic
p _{max} :	16 bar
t _{max} :	80°C

DIH-13

Housing:	POM
Cover:	PMMA (Plexi)
Seals:	NBR
Rotor:	Polypropylene
Axle:	ceramic
p _{max} :	16 bar
t _{max} :	80°C

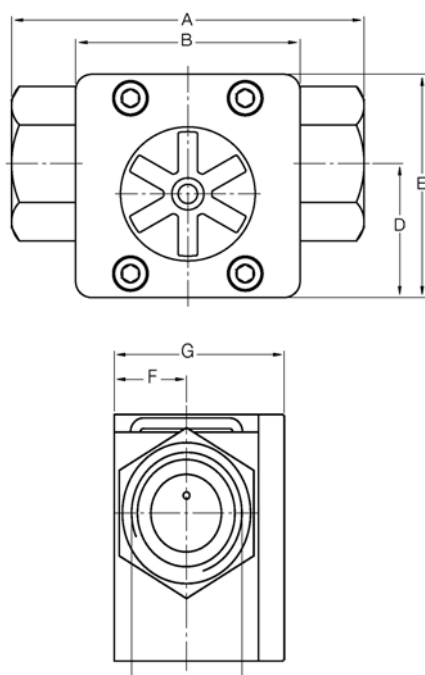
8. Order Codes

Order details (Example: DIH-1101H R10)

Indication range		Model			Connection	
l/min Water	ΔP (bar)*	DIH-11..	DIH-12..	DIH-13..	G 3/8	G 1
0.2...0.5	1	DIH-1101H..	DIH-1201H..	DIH-1301H..	R10	
0.3...2	1	DIH-1102H..	DIH-1202H..	DIH-1302H..	R10	
0.5...5	1	DIH-1103H..	DIH-1203H..	DIH-1303H..	R10	
1...12	1	DIH-1104H..	DIH-1204H..	DIH-1304H..	R10	
1...18	1	DIH-1105H..	DIH-1205H..	DIH-1305H..	R10	
1...22	1	DIH-1106H..	DIH-1206H..	DIH-1306H..		R25
1...35	1	DIH-1107H..	DIH-1207H..	DIH-1307H..		R25
1...50	1	DIH-1108H..	DIH-1208H..	DIH-1308H..		R25

* at max. flow

9. Dimensions



	until DIH-..05H R10	upto DIH-..06H R25
A	84	110
B	60	70
C	G 3/8	G 1
D	40	42
E	60	70
F	19.5	22.5
G	41.5	53