

OBS-V SERIES

Plastic Compound | Vacuum Gauge

Order from: **C A Briggs Company**

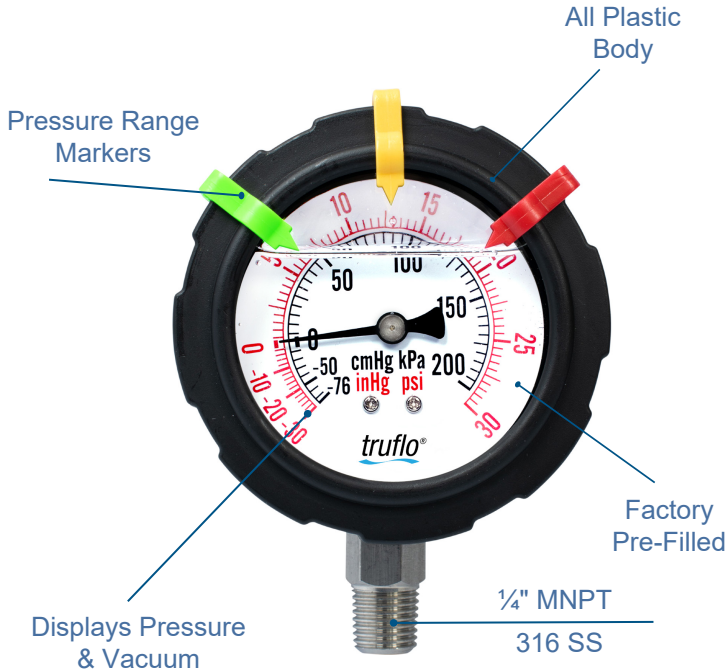
622 Mary Street; Suite 101; Warminster, PA 18974

Phone: 267-673-8117 - Fax: 267-673-8118

Sales@cabriggs.com - www.cabriggs.com



- Measures -30inHg - +30 Psi | Vacuum
- Highest Accuracy in the Industry | $\pm 0.75\%$
- No Filling or Assembly Required



Product Description

The OBS-V Series Pressure Gauge is the industry's most accurate pressure gauge on the market. With a Thermoplastic Polypropylene enclosure, OBS-V Series gauges were engineered to last in the most corrosive environments.

A 1/4" NPT 316 SS connection comes standard on all OBS-V Pressure Gauges. This connection allows for them to be a perfect mate with our GI Series Gauge Guards when dealing with extremely corrosive chemicals.

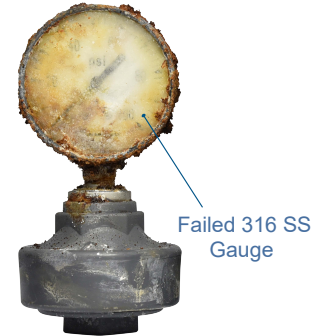
Gauge guards are utilized to protect the pressure gauge from any corrosive media in the process system via an isolator.

OBS-V Pressure Gauges come factory pre-filled, allowing us to achieve an industry leading accuracy of $\pm 0.75\%$.

Each OBS-V Pressure Gauge is equipped with Color Range Tabs. These 3 movable red, yellow and green range tabs are designed to act as a visual pressure alert for bag or filter change-outs.

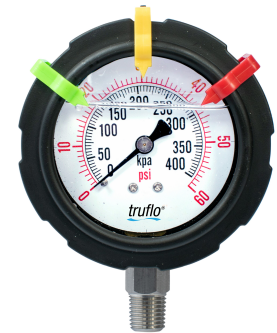
Corrosion Resistant Casing

- Corrosion Resistant PP Housing
- High Impact Polycarbonate Lens
- Perfect for Corrosive Environments Where Stainless is Unreliable



Pressure Range Markers

- Color Range Tabs: Red | Yellow | Green
- Easily 7 in 1: psi, kPa, inHg, cmHg, bar, MPa, atm
- Eliminates Manually Marking on Gauge



GI Series Gauge Guard

- Protect Internals of Gauge from Corrosive Liquids
- PTFE Teflon® Bonded Diaphragm
- PVC | PP | PVDF



Features

- Large 2 1/2" Dial
- All Plastic | Completely Corrosion Resistant Externals
- Dual Scale | psi | bar
- Suitable for Pulsing Applications
- Perfect Mate for GI Series Gauge Guards

316 SS

PP



OBS-V SERIES

Plastic Compound | Vacuum Gauge

Order from: **C A Briggs Company**

622 Mary Street; Suite 101; Warminster, PA 18974

Phone: 267-673-8117 - Fax: 267-673-8118

Sales@cabriggs.com - www.cabriggs.com



Specifications

Mounting	Direct Mount Bottom Connection
Process Connection	1/4" MNPT
Measuring Principle	Bourdon Tube 316 SS
Pressure Ranges Psi	-30 - +30
Lens	High Impact Polycarbonate
Filling	Glycerin Silicon* Halocarbon*
Accuracy	± 0.75%
Operating Temperature	PP - 190°F
Dial Diameter	2 1/2"

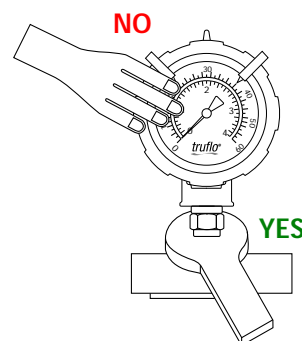
Optional*

Installation Instructions

Do not tighten by grasping the case of the gauge as this may cause damage. **Always Pressure Test Connections for Leaks** with Water Prior to Use on Chemical Service

Before installing the OBS-V Series pressure gauge, ensure attention is given to the Process Liquid, Chemical Compatibility, Temperature, Vibration, Pressure Spikes, and other climatic and application conditions that may adversely affect the performance.

The user shall ensure that the correct gauge pressure range and the correct materials of construction are selected.



Standards and Approvals

CE | FCC

RoHS Compliant

Temperature | Pressure Graphs | Non-Shock

Note: The Pressure/Temperature graphs are specifically for the Truflo® Pressure Gauges, during system design the specifications of all components must be considered.

Model Selection

OBS - V - PP

Body Material	Pressure Range psi
PP	V = -30inHg - +30

■ = PP

